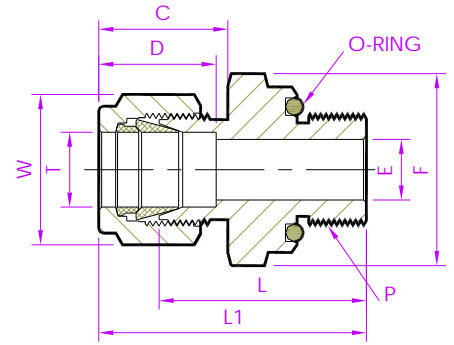


- Tube Fitting (Double Ferrule)-
 Tube To Male Pipe Thread

Male Connector



Fractional Tube x O-seal SAE/MS Straight (M)

Tubefit Part No.	Equivalent Part No. Type 1	Equivalent Part No. Type 2	TUBE OD Ø T	SAE/MS Male Pipe Size P	ØE	D	C	L	L1	Body Hex F	Nut Hex W
Dimensions in Inches											
1 - MCD - 5OSM	- 100 - 1 - OR	1M2SC2	1/16	5/16x24	0.05	0.34	0.43	0.90	1.05	9/16	5/16
2 - MCD - 5OSM	- 200 - 1 - OR	2M2SC2	1/8	5/16x24	0.09	0.50	0.60	1.03	1.29	9/16	7/16
3 - MCD - 6OSM	- 300 - 1 - OR	3M2SC3	3/16	3/8x24	0.12	0.54	0.63	1.09	1.35	5/8	1/2
4 - MCD - 7OSM	- 400 - 1 - OR	4M2SC4	1/4	7/16x20	0.19	0.60	0.70	1.22	1.51	3/4	9/16
5 - MCD - 8OSM	- 500 - 1 - OR	5M2SC5	5/16	1/2x20	0.25	0.64	0.73	1.37	1.60	7/8	5/8
6 - MCD - 9OSM	- 600 - 1 - OR	6M2SC6	3/8	9/16x18	0.28	0.66	0.76	1.38	1.67	15/16	11/16
8 - MCD - 12OSM	- 810 - 1 - OR	8M2SC8	1/2	3/4x16	0.41	0.90	0.86	1.41	1.81	1.1/8	7/8
10 - MCD - 14OSM	- 1010 - 1 - OR	10M2SC10	5/8	7/8x14	0.50	0.96	0.86	1.50	1.90	1.3/8	1
12 - MCD - 17OSM	- 1210 - 1 - OR	12M2SC12	3/4	1.1/16x12	0.62	0.96	0.86	1.66	2.06	1.1/2	1.1/8
14 - MCD - 17OSM	- 1410 - 1 - OR	14M2SC12	7/8	1.1/16x12	0.75	1.02	0.86	1.66	2.06	1.1/2	1.1/4
16 - MCD - 21OSM	- 1610 - 1 - OR	16M2SC16	1	1.5/16x12	0.88	1.23	1.04	1.81	2.29	1.3/4	1.1/2

NOTE: 1)The E Dimension is the minimum opening & fittings of this group may be back drilling to larger ID at pipe thread or straight thread end.
 2)Dimension L1, C, D is shown in the finger-tight position. 3)Dimensions are for reference only and are subject to change 4)SAE/MS (UNF) thread as per ASME B1.1.
- ALL PART NUMBERS ARE PROPRIETARY OF THEIR RESPECTIVE OWNERS. -